



*City of*  
Whittlesea

# Roadside Weed Programs

# Sustainable Land Management Program

**Mark Williams**

**Sustainable Land Management Officer**

# Roadside Weed Programs



- Focus on Council's rural road network ~500km
- Three distinct programs
  - Nassella-Focussed Program
  - Pest Plant Local Law Support
  - High Conservation Roadside Program
- Objectives
  - Meet Council's responsibilities (e.g. CaLP Act)
  - Support rural landowners
  - Enhance high conservation roadsides

# Sustainable Land Management Program

## Nassella-focussed Program

- Proactive management of high threat weeds
- Specialist contractors only
- Targets: Chilean Needle Grass, Texas Needle Grass, Serrated Tussock, Cape Tulip (*Morea* sp.)
- Objective: containment and targeting of outlier infestations





# Sustainable Land Management Program



## Pest Plant Local Law support and landowner requests

- Work targeted to support PPLL programs- all roads treated
- Specialist Contractors / Council road maintenance crews
- Receptive to landowner requests



**CAPE TULIP**

*Morea spp.*

Cape Tulip is a perennial plant which produces a long strappy leaf each year in autumn and salmon-pink to orange flowers in winter-spring. There is a one and two leaf variety.

It is poisonous to livestock but is generally avoided by stock which results in desirable pasture species being outcompeted by this weed.

Cape Tulip reproduces by underground bulbs (corms) as well as producing seed. The seed and corms can be spread by water, wind, slashing and soil movement and disturbance.

Cape Tulip is not common, so Council encourages the reporting of sightings on private land and roadsides to Council's Environment Protection Officer, Katherine Whittaker on (03)9217 2147 or email [Katherine.whittaker@whittlesea.vic.gov.au](mailto:Katherine.whittaker@whittlesea.vic.gov.au)


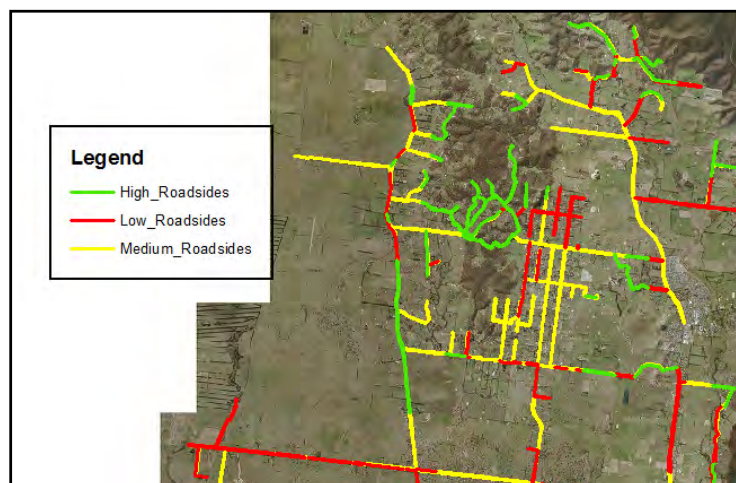


PHOTO: City of Whittlesea

Cape Tulip in flower.

## High Conservation Roadside Program

- Control of high threat weeds along H-Conservation roadsides
- Priority areas identified in RMS mapping
- All weeds targeted- mainly woody environmental weeds



# Sustainable Land Management Program



## Sustainable Land Management Program

Sustainable Land Management Rebate Scheme

Environmental Works Grant Program

Land Management Events & Field Days

Free Land Management Advice

Rural Planning Referrals

Pest Plant Local Law Education & Compliance Program



## Sustainable Land Management Rebate Scheme

- 8-49ha – 20%, 50+ha – 30%
- 2 year program
- Commitments include:
  - Weed control
  - Pest management
  - Revegetation
  - Protection of farm dams / waterways
  - Protection of remnant vegetation
  - Erosion management



2009



2014

# Sustainable Land Management Program



## Environmental Works Grant Program

- Protection and enhancement of our biodiversity values
- Funding available for:
  - Revegetation with indigenous plants
  - Provision of nest boxes
  - Fencing of remnant vegetation, farm dams, shelterbelts
  - Environmental weed control





# Sustainable Land Management Program



## Land Management Events

- Increasing productivity
- Erosion and soil management
- Preparing water budgets

## Free Land Management advice

- To help you to sustainably manage your rural property

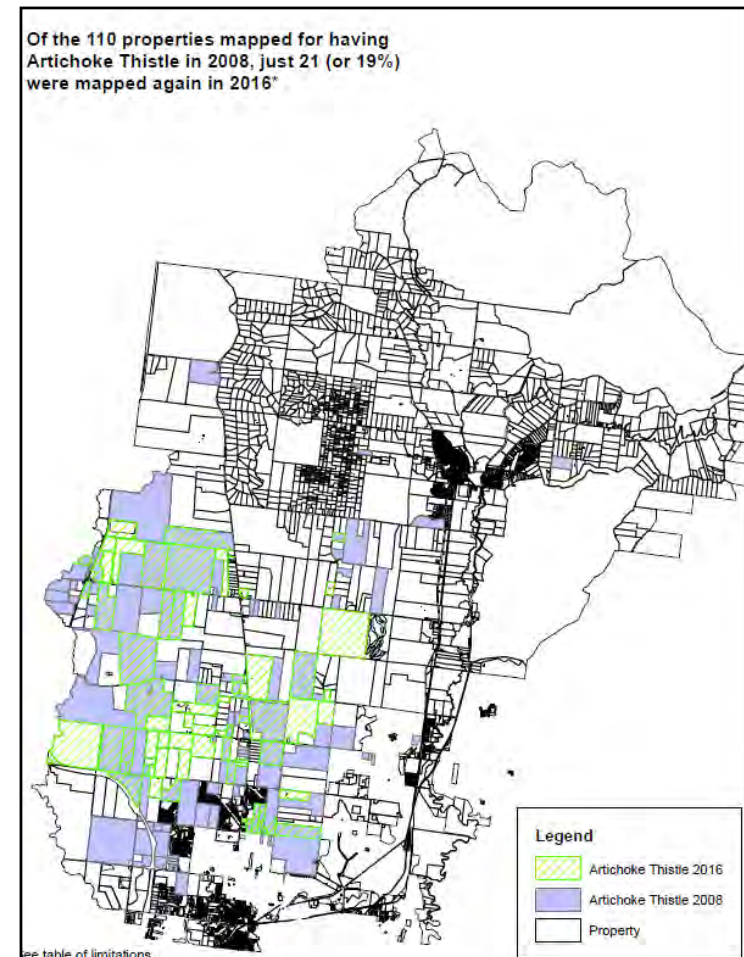
## Planning Referrals

- Ensuring rural development is suitable and sustainable



## Pest Plant Local Law Education and Compliance Program

- Listing of weeds of local significance: Blackberry, Artichoke / Spear / Variegated / Scotch Thistle, Chilean Needle Grass, Gorse, Patterson's Curse, Serrated Tussock, Sweet Briar, St John's Wort, Ragwort
- Coordinated weed control programs targeting all properties for compliance
- This approach has achieved landscape wide results





*City of*  
**Whittlesea**

# Questions ?

**Mark Williams**

**Sustainable Land Management Officer**

**03 9217 2471**

**[Mark.Williams@Whittlesea.vic.gov.au](mailto:Mark.Williams@Whittlesea.vic.gov.au)**